

eG Enterprise at Dura Vermeer

Increasing User Satisfaction Through Proactive Monitoring
And Performance Analytics



Dura Vermeer is one of the largest construction, engineering, and infrastructure services companies in The Netherlands. Headquartered in Rotterdam, the company is active in the residential, non-residential and infrastructure (road construction, civil engineering, rail construction and the environment). With 165 years of experience in the construction industry, Dura Vermeer has achieved many milestones in design and build innovation. The company undertakes over a thousand of projects each year ranging from a row of houses to motorways.

How A Turnkey Project 'Building Information Modeling' Necessitated IT Monitoring

For several years now, Dura Vermeer has used 'Building Information Modeling' for the realization and implementation of its projects. In collaboration with all parties involved, each project is initially built 'virtually' as a model and this virtual model becomes the blueprint for its implementation.

This virtual building, also called 'BIMMEN', can be done in 3D (visually) but now also in 4D (with addition of statistics) or 5D (with the addition of schedules). Because everything is better organized up front, the efficiency increases during the construction process and the costs of failure decrease.

Until a few years ago, IT was not significant for Dura Vermeer's business and employees preferred to spend as little time and energy as possible with IT tools and processes. This has changed significantly as the virtual building project requires a number of parties to work together and use IT tools. Furthermore, IT is also being used to support core systems of the company including administration and office automation. All of this has escalated the importance of IT infrastructure and application continuity and availability. IT is now crucial for all the primary business processes.

Each BIM project requires collaboration, communication and data management across internal and external team members in architecture, engineering and construction, and to support this, Dura Vermeer has set up a private cloud using Citrix technologies. The entire set of Autodesk applications is available to the different teams using application virtualization. While this has greatly simplified deployment and accelerated rollouts, at the same time, it has become extremely important to ensure anytime remote access, fast user experience and seamless digital workspace performance.



"eG Enterprise goes deeper and deeper into the root cause and analyzes the problem which brings you closer to the solution."

Hans Aalbers, ICT Director, Dura Vermeer

Key Benefits to Dura Vermeer

- ✓ Increased user satisfaction
- ✓ Increased IT operational efficiency to deliver IT services
- ✓ Faster problem detection and troubleshooting
- ✓ Improved application and infrastructure performance due to greater visibility and control of every tier of the IT ecosystem

Why eG Enterprise?

- ✓ Proactive alerts for early detection of issues
- ✓ Deep diagnostics to analyze performance problems
- ✓ Automated performance correlation and root cause diagnosis
- ✓ Built-in reports for historical analytics, capacity planning and optimization

A well-functioning IT infrastructure therefore is vitally important for Dura Vermeer. When more and more performance problems arose and complaints from frustrated users increased, Dura Vermeer understood that they needed a monitoring solution – an early warning system – to alert them of issues before their projects and deliverables get impacted.

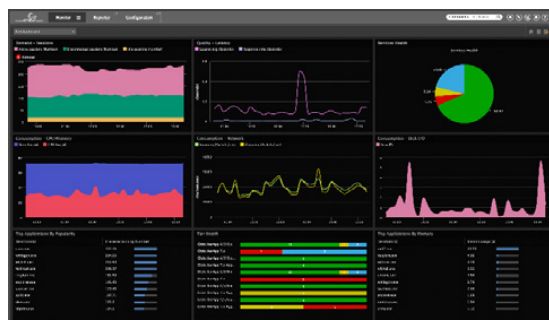
How eG Enterprise's End-to-End Monitoring and In-Depth Diagnostics Helped Dura Vermeer

Dura Vermeer found a perfect solution in eG Innovations' performance monitoring software, eG Enterprise, which provided the necessary IT performance insights, actionable analytics and proactive alerts to help diagnose performance bottlenecks and triage issues.

Hans Aalbers, ICT Director at Dura Vermeer said, "We evaluated a number of IT monitoring tools. The eG Innovations solution was by far the most complete and flexible. eG Enterprise goes deeper and deeper into the root cause and analyzes the problem which brings you closer to the solution. I am really impressed by the information you can retrieve up to the application level."

After a number of demos and a pilot, when Dura Vermeer decided to adopt eG Enterprise, they sought out INISI ICT. Sjoerd Wormgoor, Manager – Management and Support at

Dura Vermeer, added, "We already had a good relationship with INISI and it was really a pleasure to work on this monitoring project together again. INISI consultants are specialists – they have a lot of knowledge and help you quickly to solve problems. The implementation of eG Enterprise was straight forward. After building a proof of concept, everything was working fine within two days."



eG Enterprise offers holistic monitoring of end-to-end IT infrastructure from a single console

eG Enterprise was set up to monitor all of Dura Vermeer's key IT infrastructure components and applications. This included all of the Citrix tiers – XenApp servers, StoreFront servers, and NetScaler appliances, as well as the supporting infrastructure tiers such as VMware vSphere and Citrix XenServer hypervisors, Microsoft SQL database server, file servers, application servers, web servers and HPE 3PAR storage system.

The simple installation of eG Enterprise ensured faster time to value for Dura Vermeer. "An important advantage is that eG Enterprise is agent-based and configures itself. From the management console, you can indicate where to install the monitoring agent and what to monitor," noted Sjoerd. Dura Vermeer is using eG Enterprise on critical components for 24x7 monitoring but also using agents selectively on other components for on-demand troubleshooting.

Thanks to on-the-job training by INISI's consultants, Dura Vermeer is making optimal use of the eG Enterprise solution. "Immediately after the implementation, we already had a much better insight into the performance of our servers and the stability of our infrastructure has improved considerably," added Sjoerd.



By using eG Enterprise we have less chance for disruptions. We can monitor the server load and optimize usage of the servers. And we now spend less time on problem analysis. As far as I am concerned,

eG Enterprise is highly recommended for every organization with a large-scale server environment where IT is business-critical.

Hans Aalbers

ICT Director, Dura Vermeer

About eG Innovations

eG Innovations is dedicated to helping businesses across the globe transform IT service delivery into a competitive advantage and a center for productivity, growth and profit. Many of the world's largest businesses use eG Enterprise to enhance IT service performance, increase operational efficiency, ensure IT effectiveness and deliver on the ROI promise of transformational IT investments across physical, virtual and cloud environments.

Contact Us: sales@eginnovations.com | www.eginnovations.com

US: +1 866 526 6700 | UK: +44 (0)20 7935 6721 | THE NETHERLANDS: +31 (0)70 205 5210 | BRAZIL: +5511 98123 6966
SINGAPORE: +65 6423 0928 | HONG KONG: +852 3972 2415 | INDIA: +91 44 4263 9553 | KOREA: +82 2 2158 8030