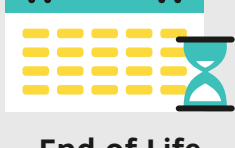


Ensure Seamless Citrix Migration and Achieve Peak Performance

It's High Time You Upgrade to Citrix XenApp and XenDesktop 7.x



End of Life

Citrix XenApp 6.5 NOT SUPPORTED AFTER
JUNE 30, 2018



Migration Forecast for 2018

70% of XenApp and XenDesktop customers are expected to complete the migration to 7.x by the end of the year

*2018 CITRIX MIGRATION SURVEY BY eG INNOVATIONS AND DABCC

Benefits of Upgrading to XenApp and XenDesktop 7.x

The latest Citrix XenApp and XenDesktop 7.x platform provides significant product enhancements and introduces many new functionalities that enhance end-user computing experience for Citrix customers.



Unified, and more scalable architecture



High-definition user experience



Enhanced delivery of graphics-intensive 3D apps



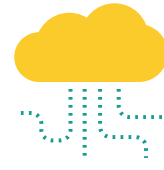
Improved user profile management



Simplified migration to Windows 10



Support for Linux desktops and apps



Easier migration to Citrix Cloud

Performance Matters, Both During and After Migration

86% of Citrix users view performance assurance as one of their top priorities during and after migration to 7.x

PERFORMANCE CHALLENGES



76%

Spend more than one day in a week troubleshooting performance issues



72%

Want to be proactively notified, so they can detect and address problems before users notice



59%

Believe that over half the time, performance problems are not due to Citrix

*2016 CITRIX PERFORMANCE SURVEY BY eG INNOVATIONS AND DABCC

Best Practices

Here are five best practices that will help you achieve seamless Citrix migration and ensure performance success:



Benchmark user experience before and after migration



Continuously monitor real user experience



Baseline resource usage patterns for every tier of the Citrix farm



Understand dependencies to isolate infrastructure issues affecting Citrix performance



Analyze capacity needs and right-size the 7.x infrastructure

eG Enterprise Performance Assurance for Citrix Migrations

eG Enterprise is an end-to-end Citrix performance monitoring, diagnosis and reporting solution that delivers actionable insights to achieve performance success during and after the upgrade to 7.x.



Assess 24x7 user logon and session access through synthetic simulation



Track all aspects of real user experience



Get deep performance visibility of all Citrix and non-Citrix tiers



Gain actionable insights for capacity planning

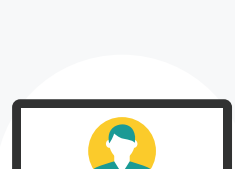


Obtain reports comparing pre- and post-migration performance



Automate topology discovery and root cause diagnosis

Customer Success Stories



50%

Improvement in user login times

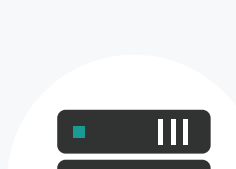
ST. CHARLES HEALTH SYSTEM



20%

Reduction in support costs

ALLSCRIPTS



\$170,000

Hardware cost savings and ROI

SKYLINK DATA CENTERS

"With eG Enterprise, you can cut down the time of troubleshooting and be proactive instead of reactive – which, in turn, translates into productivity for the organization."

Giri Sonty, End-User Computing Consultant, CUGC NY/NJ Metro Leader

Ensure Smooth Migration to Citrix XenApp and XenDesktop 7.x

Learn more:

<https://citrixready.citrix.com/eg-innovations/eg-enterprise>

Test drive a fully featured free trial of eG Enterprise:

Free Trial

Learn how eG Enterprise can help with performance assurance during and after Citrix migration:

Live Demo

Explore the Citrix monitoring capabilities of eG Enterprise:

Features