

Achieve SharePoint Performance Success with eG Enterprise



Key Benefits

- ✓ **Ensure peak performance and high availability** of SharePoint services and infrastructure
- ✓ **Improve end-user satisfaction** by optimizing site performance
- ✓ **Monitor all aspects of SharePoint performance** from a single-pane-of-glass solution
- ✓ **Troubleshoot faster** with the help of proactive alerts, deep-dive diagnostics and historical reports
- ✓ **Reduce costs** by optimizing your SharePoint infrastructure to do more with existing resources

eG Enterprise delivers a robust, reliable and extremely valuable solution to deliver maximum uptime and user satisfaction. Pre-emptive alerting helps us to address performance issues immediately before they affect system and application availability.

Mike Montano
Senior Manager, Allscripts

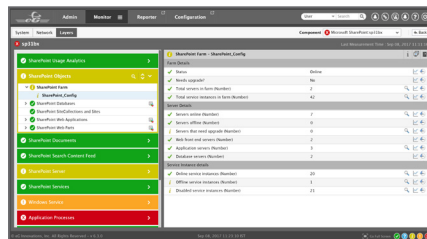
Microsoft SharePoint is one of the most business-critical services in enterprise IT infrastructures. SharePoint is not only used as a content management platform, but also used for workspace collaboration, enterprise search, file transfer, workflow management, and website development. Any performance problem in SharePoint has a direct impact on user productivity and business continuity.

Ensuring high uptime and peak performance of SharePoint is an everyday challenge for IT teams. Incorrectly configured web parts, slow pages, uncontrolled content growth, database connectivity failures, authentication problems, and load-balancing issues are among the key challenges faced by SharePoint administrators.

SharePoint Performance Management, Simplified

eG Enterprise is a complete SharePoint performance monitoring, diagnosis and reporting solution, providing IT administrators with end-to-end visibility into every tier and every layer of the SharePoint farm: site collections, sites, web applications, web parts, content, databases, logs, events, and more.

- Monitor the experience of users accessing SharePoint and be the first to know when there is any performance slowdown
- Track the availability of critical SharePoint services such as search, index, timer job, and more
- Leverage built-in reports to analyze trends, user activity and content growth
- Track all ULS logs across your SharePoint farm from one console and simplify SharePoint administration
- Get contextual performance visibility of the entire infrastructure that supports SharePoint: network, Active Directory, SQL, virtualization, storage, etc.



End-to-end SharePoint performance monitoring with eG Enterprise

eG Enterprise offers out-of-the-box monitoring support for both on-premises and cloud deployments of SharePoint. Analyzing thousands of metrics using machine learning techniques, eG Enterprise detects performance anomalies proactively, saving your team time and effort. A patented correlative intelligence engine automatically pinpoints the root cause of a performance problem, thereby enabling faster troubleshooting.

Color-coded service topology maps depict the health of every tier of the SharePoint infrastructure. Using these topology maps, IT administrators can quickly triage performance problems and determine which tier of the SharePoint infrastructure is causing slowdowns. Pre-built historical reports help analyze trends, forecast capacity needs, and deliver actionable insights to optimize the infrastructure.

eG Enterprise for Microsoft SharePoint Monitoring: Key Capabilities

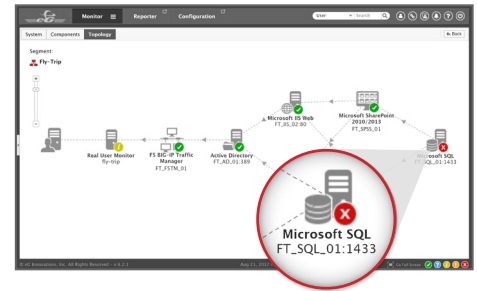
Optimize User Experience and Page Load Time

- Monitor end-user experience for your SharePoint site using out-of-the-box real user monitoring (RUM) capabilities
- Understand which geographical regions are slow, which users are affected, and when
- Measure Apdex score and keep track of end-user satisfaction 24x7



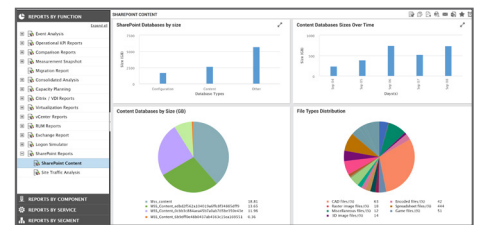
Troubleshoot Faster with Automated Root Cause Diagnosis

- Understand infrastructure dependencies with the SharePoint service using intuitive topology maps
- Auto-correlate SharePoint issues with underlying infrastructure tiers (network, AD, DNS, SQL, cloud, etc.)
- Speed up troubleshooting by automatically diagnosing the root cause of performance problems



Future-proof Your SharePoint Farm with Actionable Insights

- Track the growth rate of documents, lists, web applications, and recycle bin
- Understand which file types are contributing to data explosion
- Report on orphaned files, old and unused content
- Use built-in reports to forecast content growth and plan storage needs



Get Key SharePoint Performance Metrics at Your Fingertips

<h3>SharePoint Farm</h3> <ul style="list-style-type: none"> • Farm inventory • Site collections • Sites • Web applications • Web parts • Document libraries • Documents • File type distribution • Lists • Attachments 	<h3>Web Usage Analytics</h3> <ul style="list-style-type: none"> • Users, visitors, destinations, browsers • Apdex score • Page views • Average page load time • Average IIS latency • SQL logical reads • Average CPU duration • GET, POST, OPTIONS requests • Errors 	<h3>SharePoint Server</h3> <ul style="list-style-type: none"> • Health Analyzer alerts • ULS logs • Backup and restore operations • Resources (CPU, memory, disk, etc.) • Application processes • Search content feed and gatherer threads • Request management
<h3>SharePoint Databases</h3> <ul style="list-style-type: none"> • Configuration database • Content database • App Management database • Search Administration database • Analytics Reporting database <p>and more...</p>	<h3>SharePoint Services</h3> <ul style="list-style-type: none"> • Timer Service • Tracing Service • User Code Host • Server Search 	<h3>Supporting Infrastructure</h3> <ul style="list-style-type: none"> • Network connectivity • SQL Server • Active Directory • IIS Server • Virtualization (VMware, Hyper-V, etc.) • Cloud (Azure, AWS, etc.)

About eG Innovations

eG Innovations is dedicated to helping businesses across the globe transform IT service delivery into a competitive advantage and a center for productivity, growth and profit. Many of the world's largest businesses use eG Enterprise to enhance IT service performance, increase operational efficiency, ensure IT effectiveness and deliver on the ROI promise of transformational IT investments across physical, virtual and cloud environments.